

North Wood County Historical Society

Mansion Newsletter

Marshfield, Wisconsin

Summer/Fall 2021

Greetings

Well, the heat of summer is upon us and what is to bloom is blooming, including the weeds! I hope everyone is able to enjoy some sunshine and warm weather with family and friends.

The best part of summer for us so far has been the outstanding turnout at our Pie and Ice Cream Social during Dairy Fest. What a great kick off to summer! Many, many thanks to our volunteers for thinking outside the box on ways to serve everything safely. For those that couldn't attend, we had staff in the kitchen cutting and placing the pie slices into individual pie shaped containers with lids and the ice cream was served in individual cups. We had a mixed response on the ice cream, but the pie may be served in the container from now on. It was cleaner, bug free and if it was too much you had a container to keep it in for traveling home.

A special thanks goes out to MACCI and Wenzel Family Plaza for all of their hard work over that weekend as well, and for putting out the word about our Social. But, more importantly we want to thank the members of our community for coming and sharing their time and supporting our organization. We went in to it not really knowing what to expect. We had missed last year because of the shut down so we were a little unsure, but once we opened it was evident, we were in for a great day! It was really nice to see a lot of faces we hadn't seen since 2019! Last but not least a big THANK YOU to all the basket raffle donors... everything from kids baskets, tickets to places to go, artwork, tie dyed clothes, hunting equipment, wine and food plus much, much more.

We had our annual horse drawn carriage display again on the grounds for Hub City Days on Saturday July 31st, or as I like to call it "the original horse powered vehicles" (no offense to the car show!). I hope everyone that came out and had a chance to stop in and take a look at these marvelous pieces of equipment, and a nod to our not-so-distant past. I know the owners of these rigs take great pride in them and are eager to display them to our community every year.

A little house keeping note, we have begun work to repair the front porch. Time has made things a little saggy in spots so we hired a very talented contractor who has been straightening out the deck. In the process, like most projects on old houses, they discovered a lot more repairs that need to happen to keep the porch in good shape for years to come. The bases of the columns were a bit rotted as well as quite a number of the spindles on the railings. They want to have the lower part of the porch fixed up and supported before they reroof it. The new roof is scheduled for this summer as well. Also, this summer we are painting up the bathroom and putting in a new floor. ... We hope that a member or local business might, out of the kindness of their heart, consider a donation to help with the added costs. Contact our office and let us know how you might help.

We are grateful to all who have been part of NWCHS and look forward to many years to come. We encourage anyone who has an interest in history, community, architecture or volunteering to please stop over or call to see how you can be a part of our wonderful slice of Wisconsin roots.

Brad

From the President



Brad Allen



Upham House

NWCHS Board of Directors

President - Brad Allen
Vice President - Jerin Turner
Secretary - Kaylin Speth
Treasurer - Andrea Jackan
Past President - Don Schnitzler

Directors

Laura Ptak
Ana Jepsen
Nancy Sternweis
JoAnn Gougeon
Kris Coleman

Coordinator - Kim Krueger

Consulting Rosarians

Tom Ptak & Tom Stram

Tour Hours

Wednesday - 1:30 – 4:00 p.m.
Saturday - 1:30 – 4:00 p.m.
Or by appointment

Office Hours

June - September

Tues. 9 a.m. – 1 p.m.
Wednesday - 10 a.m. - 4 p.m.
Thursday - 9:00 a.m. – 1:00 p.m.

October - May

Monday - 9 a.m. – 1 p.m.
Wednesday - 10 a.m. - 4 p.m.
Thursday - 9 a.m. – 1 p.m.

Phone - 715.387.3322

Email - nwchs@uphammansion.com
www.uphammansion.com

Work begins on Marshfield's 2022 Sesquicentennial Celebration

By Kris Leonhardt - Hub City Times

The North Wood County Historical Society (NWCHS,) Marshfield Historic Preservation Association, MACCI, Visit Marshfield, and other individuals and organizations are collaborating on ways to celebrate Marshfield's sesquicentennial in 2022, and are inviting others to help in the planning. Individuals are needed for reenactments, research, activities, student collaborations and more.

If you are interested in brainstorming, planning, or volunteering for the 150th anniversary event, contact NWCHS at 715-387-3322 or email nwchs@uphammansion.com, or find "Celebrating 150 Years of Marshfield!" on Facebook. Those interested are invited to join planning meetings via Zoom. *(Continued on page 5)*

Snowmobile Enthusiasts gather in Marshfield for 16th National Show

The 16th Annual Vintage Snowmobile National Championship Show and Swap took place Aug. 6-8 at the Marshfield Central Wisconsin State Fairgrounds. Despite light rain, the event drew more than 2,000 visitors, and displayed more than 550 snowmobiles. It was the first time in the show's 16-year history that it was hosted in Wisconsin – a state rich in snowmobile history.

Fifty-years ago, Wood County boasted Snowmobiling as the "fastest growing family sport" at the Central Wisconsin State Fair. The display featured a Jac-Trac snowmobile, sleigh, suits, boots and helmets. Jac Trac Inc, a local snowmobile manufacturer began operations in Marshfield during 1969. At the time it was one of about 65 companies in the country manufacturing snowmobiles.



The Central Wisconsin Fair display (1971) featured a Jac-Trac snowmobile, sleigh, suits, boots and helmets.

The company's first season goal was assembly of just 800 machines. That year the company produced the 1970 model Sno-Bunny. The Sno-Bunny was not a "standard" model in concept. It weighed 100 to 150 pounds less than competitive machines, and was shorter, intended as a one-passenger unit. As production began in 1970, the company added a new snowmobile, the 1971 model Jac Trac. The Jac-Trac, larger than the Snow-Bunny, came in four models with either the 399 cc or 340 cc engine. The production line went into full swing during October with about 20 employees assembling about 16 snowmobiles a day. Production continued until orders were filled. No machines were assembled until they were ordered.

The snowmobiles were sold factory direct to the dealers located in Wisconsin, Minnesota, Iowa, Upper Peninsula and North and South Dakota. Altogether, Jac-Trac had about 175 dealers. Despite a good start and distribution, Jac-Trac Inc found it necessary to discontinue assembly in October 1973, and then liquidated operations in early 1974 citing the lack of snow and the energy crisis as contributing factors.



Members of the group created a prize-winning exhibit for the show featuring one Sno-Bunny, five Jac-Trac sleds, a "mini-Jac" and a historical timeline of Marshfield's own Jac-Trac Company.

Today, a Facebook group, Jac-Trac Snowmobile Enthusiast, exist for Jac-Trac and Snow-Bunny snowmobile owners and enthusiasts to share pictures and information, ask questions, and get in touch with others sharing an interest in these cool old machines.

Recent Historical Society Activities

June Dairy Days - Pie & Ice Cream Social



Attendees had several pie choices from which to choose.



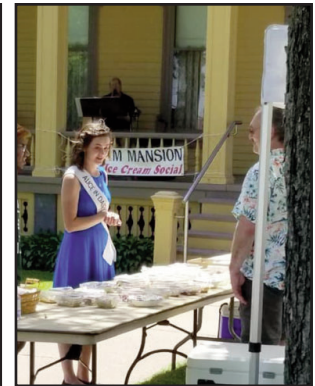
The annual NWCHS Basket Raffle fundraiser was a financial success.



(l-r) Madeleine Lawler, Sammy Halle, Laura Ptak, and Nancy Sternweis prepare pies for the sale.



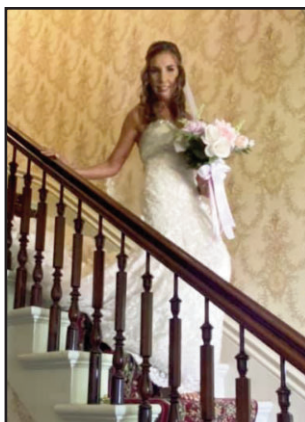
Everyone who attended the event enjoyed a great day of fun, food and entertainment



Alice in Dairyland, Julia Nunes, choosing the perfect piece of

Wedding Bells at the Mansion

In June Teisha Hinojosa and Nick Humphrey had a beautiful day to celebrate their wedding on the Upham front lawn. The Upham House and yard is available for special events. Please contact the office for more information. 715-387-3322 or nwchs@uphammansion.com



Recent Historical Society Activities

Upham House Porch Restoration



Ryan Niehaus of Kountry Home Builders works on reestablishing the support piles under the porch. This miniature pitcher was the only artifact found there.



Hub City Days - NWCHS "Horse Power Carriage Exhibit"



Marathon City Brewery Beer Wagon. Model year: early 1900s. Owners: Jim and Barb



Vis-a-Vis Cutter Sleigh. Model year: late 1800s-early 1900s. Owner: Jim Vitort



Vis a Vis (replica), owned by Ken and Connie Wunrow, A&W Farms



Fire Hose Cart No. 1. Model year: 1887. Owner: Marshfield Fire and



Beer Wagon. Model year: 1950 originally created for the Marshfield Brewing Co. and was in the 1956 Wood County Centennial. It was sold to Figis Brewing Inc. in 1967. Now owned by NWCHS.

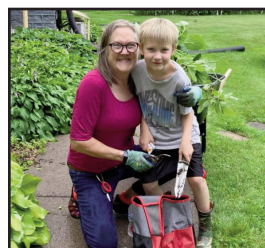


Marshfield Rural Rt. 3 Mail Buggy. Model year: late 1890s. Owned and operated by Alois (Al) Nikolai, donated to the NWCHS by the Helen Nikolai family

"Thank you" to all our yard volunteers



April 24th - folks from Calvary Bible Church helped with the Upham yard clean up. Not pictured from NWCHS are Tom & Laura Ptak, Don 'Schnitz' Schnitzler, Brad Allen, Tom Stram.



Geri Mirko and her grandson Dillon

A successful brat fundraiser



Continued from page 2

Want to help plan Marshfield's 2022 Sesquicentennial?

Recent announcements on celebrating Marshfield's upcoming sesquicentennial in 2022 included an invitation to help in the planning of activities. Preliminary background research for some of those activities are ongoing, but to complete tasks in a timely manner, additional help is still needed. Those tasks include data entry, and/or researching Marshfield's historical newspapers online. These can be completed easily enough from the historical society, Everett Roehl Marshfield Public Library or even at your home. Templates and training are available to get you started.

The first project, creating a comprehensive listing of Marshfield businesses by name and location, is relatively straightforward. We're assembling an electronic mailing list for Marshfield businesses with their street address. Volunteers using an available Marshfield phone book or directory enter the names and address of each business into a database by year.

Once the approximately 100 available phone books are entered, the data from the individual databases will be merged to create a comprehensive business directory for city businesses. The ability to sort or manipulate the data can identify and sort the business location(s), name changes, moves to other locations, time in existence and so on.

No doubt this new comprehensive business directory, which will eventually be available as an electronic file at the library, will be a beneficial resource for the community. For the upcoming anniversary, the list of business names and addresses serve as a starting point for our second project, researching local business histories through Marshfield's online historical newspaper collections. Searching the historical newspapers by a business name or address helps us uncover "The Rest of the Story" for that business. A search match might turn up a comprehensive business history, but often times provide pieces of information, or additional clues, used to guide further research or add to the developing story. As with the data entry for the business directory, initial newspaper searches can be completed at the historical society, public library or at your home (accessing resources through the library's website with your library card).

While searching the online newspapers, a researcher may run across a photograph connected to the newspaper story. This brings us to third project already underway, identifying existing business photographs in the historical society's photograph collection or the Marshfield News-Herald photograph collection at the historical society. Since needed resources (photographs, negatives and indexes) are maintained by the historical society, work on the photographic collection will be completed at the Upham House either during regularly scheduled research hours or by appointment.

The year 2022 seems a way off yet, but work on the historical society's photographs, identifying those for a "Now and Then" collection and coordinating the new images becomes more pressing as the seasons change. At least twenty-five photographs need to be completed before the snow flies later this year. These are just a few of the opportunities to be involved with the upcoming Sesquicentennial projects now. If interested in helping with any of these projects, please contact the North Wood County Historical Society, 715-387-3322 or contact Don Schnitzler at 715-383-9775.



Celebrating Central Wisconsin History

Heritage



A Magazine dedicated to the History of Wood and Portage Counties.

Published in July and January
with two convenient ways to subscribe
Call us at 1-7152584360

OR

Complete form and mail with check, money
order or credit card to: Muti Media Channels,
Subscription Department PO box 408,
Waupaca, WI 54981

☐ 1-year subscription for \$10.00 2 times per year.

Name: _____ Phone: _____

Address: _____ Email: _____

City: _____ State: _____ Zip: _____

CREDIT CARD INFORMATION

CARD NO. - - - EXP. DATE /

☐ VISA ☐ MasterCard ☐ American Express

Name on Card: _____

Authorization Signature _____

Celebrating Central Wisconsin History
HERITAGE

Spoken History Series

Those interested in learning more about the area's rich history are invited to attend the monthly Spoken History presentations virtually via a Zoom platform hosted by the Everett Roehl Marshfield Public Library. As was past practice, these monthly presentations will be offered the first Monday of each month at 6:30 pm. Dates of upcoming presentations and speakers are listed here through December. The presentations are FREE and open to the general public. Preregistration is necessary and required to join the live presentation. As the Zoom links are created and finalized, the titles, descriptions, and registration links will be shared with members by email, future issues of the Mansion News, and Society's website and Facebook Page.

Please plan to sign in to these virtual presentations:

September 13 - North Wood County Historical Society

Program: The Impact of the 1872 Wisconsin Central Railroad Extension on a Developing Northern Wood County

Presenter: Don Schnitzler, NWC Historical Society

October 4 - Everett Roehl Marshfield Public Library

Program: The Real Laura Ingalls Wilde

Presenter: Laura Keyes is the Director of the Dunlap Public Library in Central Illinois and a historical reenactor. She recently received the "Excellence in Performance" award from the Association of Lincoln Presenters.

November 1 - North Wood County Historical Society

Program: Marshfield Historic Preservation Association

Presenter: Shirley Mook, President, Marshfield Historic Preservation Association

December 6 - Marshfield Area Genealogy Group

Program: Guide to the History and Culture Around You, "clio.com"

Presenter: Don Schnitzler, Marshfield Area Genealogy Group,

Watch on YouTube the following recorded past "Spoken History" Presentations:

Search for North Wood County Historical Society on Youtube

- Marshfield to Celebrate 150th Anniversary; and how you can get involved. Presented by Don Schnitzler
- History Lost: Marshfield's Automotive Businesses, Part One, presented by Vickie Schnitzler
- History Lost: Marshfield's Automotive Businesses, Part Two, presented by Vickie Schnitzler
- A War Hero's Life In Marshfield, presented by Bob Spurlock
- History of Marshfield's Senior Craft Shoppe, presented by Vickie Schnitzler
- Complete History of Marshfield Schools, presented by Mike Meyers
- The Adler Bakery, Marshfield, presented by Jim Adler
- Wood County Parks; Their Creation and Projects, presented by Chad Schooley
- Marshfield Historic Driving Tours, presented by Vickie Schnitzler
- It Happened on Main Street, presented by Don Schnitzler and Mike Meyers
- 1905 Marshfield Illustrated, presented by Don Schnitzler
- Marshfield's First Family, presented by Don Schnitzler
- Voyage of the Comrade, by Kim Krueger
- Wicked Wood County Wisconsin, presented by Rhonda
- Skunk Hill, presented by Robert A. Birmingham
- Beyond the Dress, presented by Kim Krueger and Vickie Schnitzler
- Fill 'er Up The Glory Days of Wisconsin Gas Stations, presented by Jim Draege

Also tune in to watch the following video presentations on Youtube ...

"Pre-recorded Behind the Scenes at the Governor William H. Upham House"

- Part 1, Storage Rooms
- Part 2, Storage Room
- Part 3, Military Closet
- Mystery Closet
- 1987 Dairyfest Parade



Thanks to the Marshfield Clinic Print Shop, we are now able to send all our newsletters in color. They have graciously agreed to print our quarterly newsletter as a donation to the Historical Society.

Now accepting memberships for NWCHS



Membership and Donation Form

212 West Third Street, PO Box 142

Marshfield, Wisconsin 54449

Phone: (715) 387-3322 E-mail: nwchs@uphammansion.com Web Site: www.uphammansion.com

Preserving North Wood County history since 1952

Please make checks payable to NWCHS. Send to: NWCHS P.O. Box 142, Marshfield, WI 54449

Name: _____

Address: _____

City: _____ State: _____ Zip: _____

Phone: _____ Email: _____

Acknowledgement of donations will be emailed for those who provide an email address. End of year receipts for all donations will be mailed out in January of the subsequent year.

I/We wish to support the NWCHS –Governor W.H. Upham House for the year 20__

- ☐ Individual \$35
 ☐ Student \$10 (High School & College)
 ☐ General Gift \$ _____
☐ Family \$50
 ☐ Business \$100
 ☐ House Restoration \$ _____

Memorial—In Memory of _____ \$ _____

All memorials will count as General gifts unless otherwise designated:

North Wood County Historical Society Needs Your Help

This is our **Wish List** and areas where members and nonmembers can **Volunteer** to help the Society

- **Funds for purchasing archival boxes for garments.** We have numerous garments that should not be hung and need garment boxes for safe storage. Please contact Kim at nwchs@uphammansion.com or 715-387-3322 for more information.
- **Donate postage stamps** to help cover mailings
- **Join the Society** by sending in your application with your yearly dues
- **Bake pies** for Dairyfest
- **Guide at Upham House**- occasional Saturday afternoons (We will train you!)
- **Garden and yard care** - seasonal work
- **Help with special events** - Dairyfest, Hub City Days - Carriage Exhibit, Christmas Open House
- **Identify and classify photographs** - meet one Saturday afternoon a month
- **Artifact care and accessioning** - Wednesday or Saturday afternoons
- **School partner** - work with projects with education liaison and students at Upham Mansion
- **Research exhibits** - develop exhibit material and historical data for the Exhibit Committee
- **Help design exhibits** - layout and display of artifacts with the Exhibit Committee
- **Sponsor an event** - ideal for businesses, groups of members, families

North Wood County Historical Society
PO Box 142 (Mailing Address)
212 W. Third St.
Marshfield, WI 54449



Announcing the Annual NWCHS Member & Friends Picnic

Wednesday, September 15 • 6:00 p.m. - 8 p.m.

Governor W.H. Upham House
212 West 3rd Street

Plates, silverware, drinks & meat entrees will be provided

Please Bring: • A Friend • A side dish or dessert to pass
• A lawn chair

Mark Your Calendar

Christmas Ornament Classes are Back

North Wood County Historical Society (NWCHS) will again host Christmas ornament classes at the Upham House on Oct 17, Oct 24 (which continues on Oct. 31); Nov. 7, Nov. 14 and Nov. 28. All classes will be on Sundays from 1-4 pm.

Schedule

October 17 - No sew quilted Pine Cone Ornament
October 24 - Santa (session 1 of 2)
October 31 - Santa (session 2 of 2)
November 7 - Folded German Star/Polish Star
November 14 - Cookie Cutter ornament
November 28 - Swag class

The classes are free to members of NWCHS or a small donation to cover the cost of materials, but spaces are limited to 10 persons per class. Pre-registration is required. Call NWCHS office (715-387-3322) to register for a class(es).



December 2021

**Fresh Wreaths,
Garlands and
Centerpieces**

Plan Ahead - Be the first to Order!

The wreaths are made of balsam boughs, decorated with clusters of pinecones and a red velvet bow. Proceeds benefit the North Wood County Historical Society.

Outside Diameter of items: Wreaths -
20 inches, 24 inches
and 36 inches.

Specialty Items:
Door Swag
Balsam Garland
25 feet